



## ESMPRO™ Management Suite

- Full IT Life Cycle Management
- Impressive TCO Reduction
- IT Resources Optimisation
- Centralised Administration
- Unified Operability

Comprehensive  
System Management  
Solution to Streamline  
your IT Operations

[www.nec-online.com](http://www.nec-online.com)  
a division of NEC Computers International



## ESMP<sub>RO</sub><sup>TM</sup> management suite is a cost-effective solution to facilitate daily IT operations and significantly reduce TCO

### ■ The IT department challenge

IT Departments permanently face the difficulty in managing the life cycle of their IT resources —deploying, administrating and supporting PCs, installing and maintaining software on each PC and keeping them up to date with the latest security patches. The vast responsibility of the IT department translates into a multitude of ongoing, time-consuming tasks. Their challenge is to bring the company the best-to-fit solutions with the right level of service so that each employee can safely focus on company's core business. ESMP<sub>RO</sub> software suite is an extensive system management solution designed to give the IT department the tools to handle the full scope of IT operations by automating tasks, providing real-time information, setting policies and facilitating end-user support.

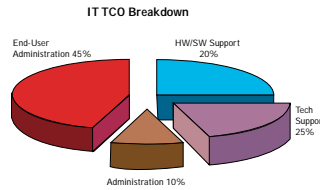
### ■ The key to TCO<sup>1</sup> reduction !

Because your IT Department has to manage and service multiple types of resources, the efficiency of its operations is the key to cost saving. By having the capacity to perform any IT operation (software & patch tele-distribution, system monitoring, files transfer, helpdesk etc.) from one central point, your IT team gains considerable time and productivity.

Moreover, IT operations can now be scheduled and automated, which leverages the ability of your team to focus on new projects and core business applications.

By simplifying a wide range of IT operations, the ESMP<sub>RO</sub> management suite significantly

reduces your TCO, reaching up to 30% during the 1<sup>st</sup> year and 5-10% during each of the next 5 years <sup>2</sup>.



### Specifications

Supported platforms :

**Any Hardware Vendor  
Windows (All versions)**

Databases supported :

**MSDE, SQL, Oracle**

### Key features

#### Tracking

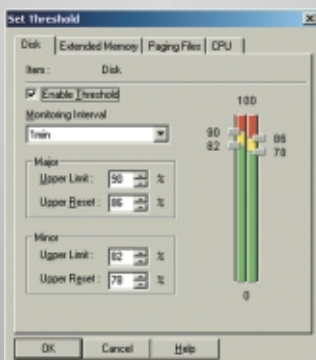
**Even when the client name or IP address is changed, ClientManager is able to keep track of the PC, enabling effective assets control.**

#### Real-time information

**The CPU, disk and memory use rates are displayed numerically or graphically.**

#### Performance recording

**Each client can record the CPU, disk and memory utilisation rates. Performance can be monitored according to defined thresholds.**



### Client installation

**Automatic and remote client installation saves the trouble of manual admin work.**

## ESMP<sub>RO</sub><sup>TM</sup> ClientManager

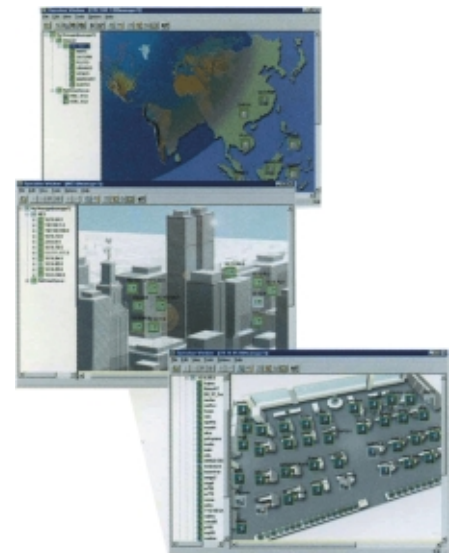
### Comprehensive Client Management and Asset Control

■ **ClientManager** is the best-in-class asset management solution that provides you full control of your PCs from a central administration console. With ClientManager, you can easily represent your IT environment with a powerful graphical and hierarchical view of your systems. ClientManager retrieves **all systems information** (OS version, memory, disks & partitions, serial numbers, network details etc.) and automatically stores it in a database.

In addition, ClientManager provides powerful **Software Inventory** and **Licence Management** features, which allow you a much easier management of the installed software and its licences.

You can also create group policies with CPU performance or disk/memory usage thresholds to be **alerted** via multiple notification mechanisms (popup window, email, SMS etc.) when values go beyond your pre-defined sets.

With ClientManager, you can **real-time monitor** the performance of each single machine.



*Graphical representation of IT environment*

**ClientManager puts you one step ahead of any potential problem!**

<sup>1</sup> TCO = Total Cost of Ownership

<sup>2</sup> Gartner Dataquest: 14 November 2002

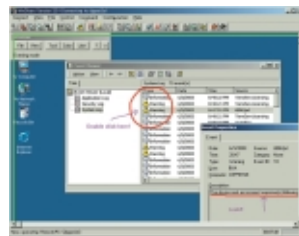
## ESMPRO™ management suite helps your IT department to centralise end-users support

### ESMPRO™ WinShare

### Remote Control of Client PCs

■ **WinShare** is an easy to use and efficient solution to take control of remote computers. Whenever an employee encounters a problem with his mail client, web access or business application, your IT department can remotely access the computer and resolve the problem immediately!

WinShare includes a Point-to-Point file transfer tool, in case the IT Support needs to apply a patch or quickly install a troubleshooting utility. In a few clicks, your support team can transfer files or directories to the remote PC, and then launch any executable file or set-up commands.



With WinShare, end-user Support becomes easy and efficient!

Furthermore, your support team can remotely take control of the end-user mouse and keyboard and interactively communicate with the user via a graphical Navipad tool. Wherever the employee is located, WinShare can be optimised and configured to occupy a low bandwidth, to avoid network overload.

### Specifications

Supported platforms :  
Any Hardware Vendor  
Windows (All versions)

### Key features

Remote control  
Take full control of the remote PC to facilitate end-user support or maintenance.

### Interactive communication

The Navipad tool helps you communicate interactively with the end-user through the network.

### Performance

WinShare is built for robustness and very low bandwidth usage.

### Client installation

Automatic and remote client installation saves the trouble of manual admin work

### ESMPRO™ FileTransfer

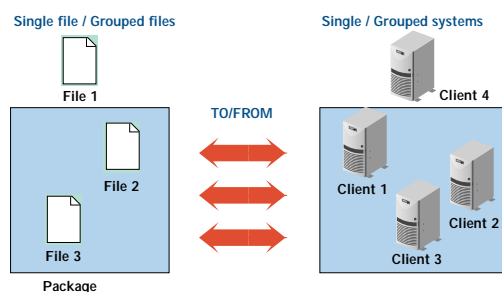
### Efficient Data Distribution

■ **FileTransfer** is an intuitive and easy to deploy solution to keep full control of file transfers within your company. Whenever you need to consolidate or transfer files such as pricelist, newsletter, anti-virus updates, FileTransfer can readily distribute the data between all systems across the network. FileTransfer lets you define a comprehensive transfer policy. Your IT team will be able to create groups of files and machines and set-up transfer jobs to and from any of these groups. Owing to its advanced features (file

grouping, logical naming, data compression, job management etc.), FileTransfer assures an efficient relocation of data in the organisation.

By scheduling file transfer jobs, your IT department will optimise network traffic, while file transfers statistics and status are available through the user interface.

With the expansion of business, network volume and IT infrastructure, FileTransfer adapts to your IT environment, ensuring files dispatch to all systems connected to the network !



### Specifications

Supported platforms :  
Any Hardware Vendor  
Windows (All versions)

### Key features

Multiple destinations transfer  
Transfer a file or a directory from a server to multiple destination systems. To ease the task, multiple destination servers can be registered as a group.

### Data compression/expansion

When transferring large files, you can use the compression/expansion feature in order to reduce the amount of data transferred.

### API support

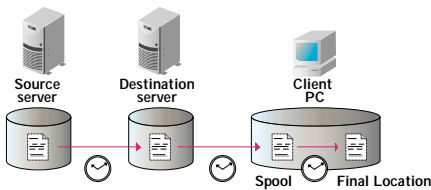
FileTransfer supports and can be used through different APIs, thus allowing integration into your proprietary applications.

## ESMPRO™ management suite empowers software deployment and maintenance within your organisation

### ESMPRO™ DeliveryManager

#### Software Distribution Management

■ **DeliveryManager** is a powerful solution for software distribution and maintenance across the network.

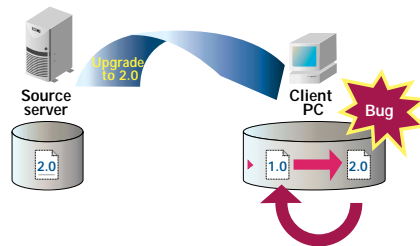


Once your IT department decides to install a new application or upgrade an existing one with a patch, you can easily load the application into DeliveryManager and schedule the remote installation on end-users PCs.

DeliveryManager enables a two-steps scheduling and installation process that ensures timely software implementation. With DeliveryManager, files can be distributed to dozens, hundreds or even

thousands of clients *without the need for any manual intervention*, resulting in significant time and cost savings. *Status and statistics* of software and patch distributions are available through an intuitive *user interface*.

If for any reason an error occurs during the distribution, DeliveryManager *rolls back* to the original version and lets your IT team workout the issue without inconvenience to the end-user. *With DeliveryManager, your IT team fully automates and controls daily operations !*



#### Specifications

Supported platforms :  
**Any Hardware Vendor  
 Windows (All versions)**

#### Key features

Status inquiry  
**Distribution status information per task or per Group.**

#### Revision management

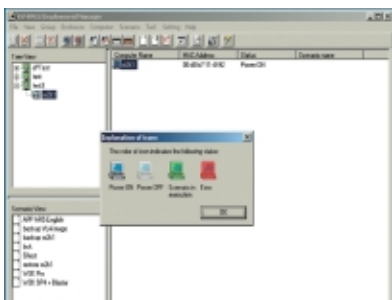
**The System Manager lets the IT team manage software and patch revisions according to the company policy.**

Pre-processing and post-processing  
**Optional processing can be configured before or after updating files or packages.**

### ESMPRO™ DeploymentManager

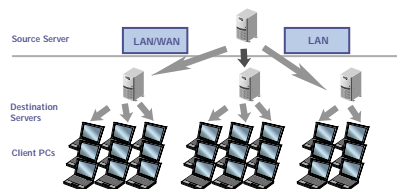
#### Simplified System Migration and Deployment

■ **DeploymentManager** is an easy and comprehensive solution for the deployment of operating systems, corporate master images, applications, hot-fixes, patches and bios updates on remote systems (PCs or servers).



DeploymentManager allows your IT team to define *groups of machines* on which they control and *schedule a deployment scenario and policy*. Each scenario can be *customised* to perform any of the above-mentioned operations including the ability to backup and restore physical disks or partition images.

**DeploymentManager empowers your IT team to easily deploy systems across the organisation !**



#### Specifications

Supported platforms :  
**Any Hardware Vendor  
 (Server & Desktop)  
 Windows 2000, XP, 2003 & Linux**

#### Key features

Deployment operations supported:  
**Operating systems, corporate master images, applications, hot-fixes, patches, bios updates, disk and partition images backup and restore.**

#### Group definitions

**Deploy software to a group of machines and monitor deployment status.**

#### Scheduling

**Keep full control of your deployment with a powerful scheduling feature.**