

Aastra MX-ONE™ Manager Provisioning

Aastra MX-ONE™ Manager Provisioning (MP) is a web-based interface that makes administration of Aastra MX-ONE users, simple and effective.

Through MX-ONE Manager Provisioning end-user settings are propagated to the different parts of the system, such as MX-ONE Telephony Server, OneBox (unified messaging application) and CMG (contact management).

Each end-user can be assigned one or several extensions, as well as a mailbox and other services. With a user-friendly web interface, MX-ONE Manager Provisioning provides task-oriented features for fast and easy administration. The configuration is executed in real-time and eliminates the need of synchronization with MX-ONE.

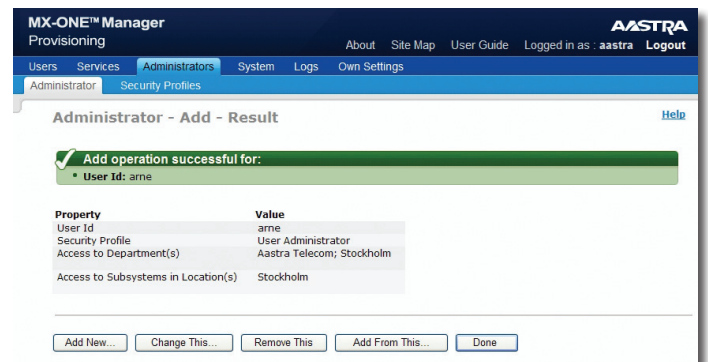
Main Features

- ✦ Web-based Graphical User Interface (GUI) configuration tool - does not require any special client software
- ✦ Configures one or several MX-ONE Telephony Systems, OneBox and CMG, and provides links to other management GUI, such as Aastra Mobile Client (AMC) portal
- ✦ View, add, remove and change: end-users, departments, administrators, extensions, mailboxes
- ✦ Provides direct access to MX-ONE Manager Telephony System where you can view, add, remove and change groups, categories, access codes, voice announcements or more, depending on your access
- ✦ Uses templates for faster configuration - templates can be downloaded and uploaded to other MX-ONE Manager Provisioning applications
- ✦ Supports HTTPS for secure configuration
- ✦ Integration with Microsoft Active Directory (AD). This allows the system administrator to manage their corporate user data base, including additions or changes in phone numbers etc. directly from the AD management interface. Changes affecting an MX-ONE user's profile will be provisioned directly via the AD integration to Manager Provisioning

MX-ONE Manager Provisioning tool supports configuration of MX-ONE extensions. It is directly connected to MX-ONE and fetches information, such as free numbers and existing

extensions, in real-time and presents it to users where and when needed.

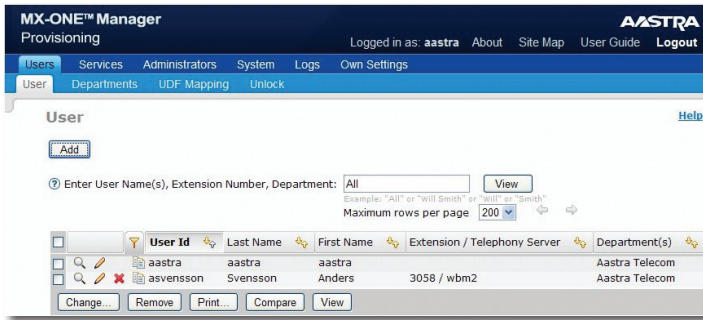
MX-ONE Manager Provisioning remembers which settings were last used and there is no need to specify the same information every time the system is accessed.



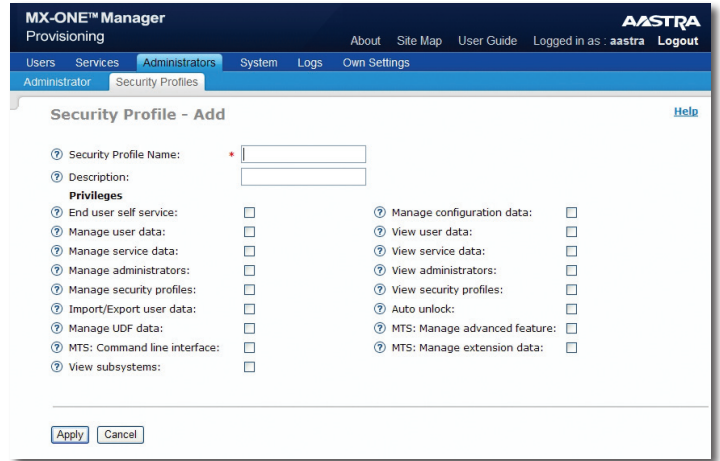
Administrator user interface

User Advantages

- ✦ Administer one or multiple extensions at the same time
- ✦ Print the configuration for one or multiple instances of each task, such as users, extensions, sub-systems, administrators, and security profiles
- ✦ Database comparison helps in identifying differences that may cause operational problems
- ✦ Multiple entries can be viewed and compared side by side
- ✦ Use templates for extensions to minimize the number of fields to set up. Templates can be shared with other MX-ONE Manager Provisioning applications
- ✦ Online help with user guide, task help and individual field help
- ✦ A site map gives you an overview and direct access to all tasks
- ✦ With task orientation, all settings associated with the tasks are collected on the same page



MX-ONE Manager Provisioning - user interface



Security profile interface

General Features

- * End-user-oriented configuration, where you first create a user account and then associated user services, such as extensions and mailboxes
- * Configuration of system administrators by promoting end-users with a higher security profile. These administrators can also access the MX-ONE Manager Telephony System interface, if the security profile allows this
- * Access control for administrators based on location, authority level (security profile) and department affiliation
- * Configurable security profiles
- * Logging of login attempts (security log), user activities (audit trail log) and internal information (event log)
- * Import function for adding user and department data from DNA, CMG and comma-separated CSV formats. The DNA and CMG formats are mainly used for migration purposes
- * Export function where the data can be exported in CMG and a generic XML format. The XML format is the most complete
- * Local backup and restore of the MX-ONE Manager Provisioning database. You can also trigger backup of any of the connected MX-ONE
- * The Compare with Subsystem task lists differences between the MX-ONE Manager Provisioning database and MX-ONE, CMG and OneBox. This makes it easy to correct inconsistencies in a controlled manner
- * Self-service where the end-users can access MX-ONE Manager Provisioning and manage personal lists, function keys and general settings themselves
- * Login lock after three unsuccessful login attempts. An end-user can unlock an account by entering his or her user ID. A new password will then be sent to the end-user's registered e-mail address, if an e-mail server is set up

Technical Information

Server requirements

- * SUSE Linux Enterprise Server 10 Service Pack 3
- * Optional – SMTP-compliant e-mail server

Client side requirements

- * Microsoft Internet Explorer 7.0 or later
- * Mozilla Firefox 3.0 or later

Manager Provisioning support (backward compatible)

- * MX-ONE Telephony System from version 4.1
- * CMG from version 2007 SP3
- * OneBox from version 4.2

Manager Provisioning deployment options

- * Standalone on own Linux server
- * On the same server as MX-ONE

Interfaces

- * HTTP and HTTPS