

Aastra MX-ONE™ Manager Provisioning

Aastra MX-ONE Manager Provisioning is a web-based interface that simplifies routine administration of end-users and their services in Aastra MX-ONE communications system.

Through MX-ONE Manager Provisioning, end-user settings are propagated to the different parts of the system, such as Aastra MX-ONE Telephony Server, MX-ONE Messaging and Aastra Contact Management (CMG).

Each end-user can be assigned one or several extensions, as well as a mailbox and other services. With a user-friendly web interface, MX-ONE Manager Provisioning provides task-oriented features for fast and easy administration. The configuration is executed in real-time and eliminates the need of synchronization with Aastra MX-ONE Telephony Server.

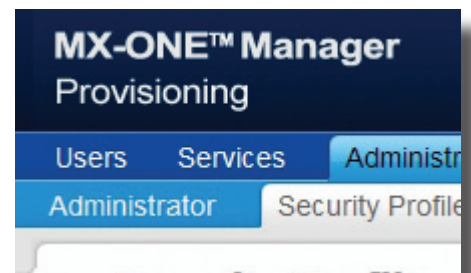
Main Features

- ✦ Web-based graphical user interface (GUI) configuration tool that does not require any special client software
- ✦ Configures one or several MX-ONE Telephony Servers, MX-ONE Messaging and CMG, and provides links to other management GUIs, such as Aastra Mobile Client (AMC)
- ✦ View, add, remove and change: end users, departments, administrators, extensions, mailboxes
- ✦ Provides direct access to MX-ONE Manager Telephony System where you can view, add, remove and change groups, categories, access codes, voice announcements or more depending on your access
- ✦ Uses templates for faster configuration. Templates can be downloaded and uploaded to other MX-ONE Manager Provisioning applications.
- ✦ Provides a web service (SOAP) interface for third-party applications

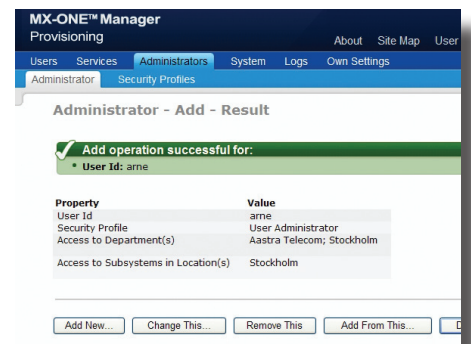
- ✦ Supports HTTPS for secure configuration

MX-ONE Manager Provisioning tool supports configuration of all existing MX-ONE extension types. MX-ONE Manager Provisioning is directly connected to MX-ONE Telephony Servers and fetches information, such as free numbers and existing extensions, in real-time and presents it to users where and when needed.

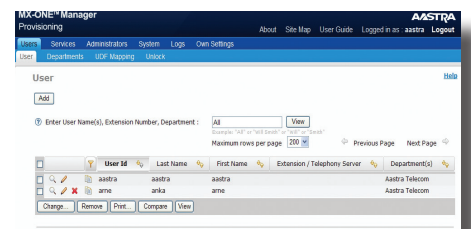
MX-ONE Manager Provisioning remembers which settings were last used and there is no need to specify the same information every time the system is accessed.



MX-ONE Manager Provisioning



Administrator interface



User interface

MX-ONE™ Manager
Provisioning

AASTR A
About Site Map User Guide Logged in as : aastra Logout

Users Services Administrators System Logs Own Settings

User Departments UDF Mapping Unlock

User [Help](#)

Enter User Name(s), Extension Number, Department :
Example: "All" or "Will Smith" or "Will" or "Smith"

Maximum rows per page

<input type="checkbox"/>	<input type="text"/>	User Id	Last Name	First Name	Extension / Telephony Server	Department(s)
<input type="checkbox"/>	<input type="text"/>	aastra	aastra	aastra		Aastra Telecom
<input type="checkbox"/>	<input type="text"/>	arne	anka	arne		Aastra Telecom

MX-ONE Manager Provisioning - User interface

User Advantages

- ✦ Administer one or multiple extensions at the same time
- ✦ Print the configuration for one or multiple instances of each task, such as users, extensions, subsystems, administrators, and security profiles.
- ✦ Database comparison helps in identifying differences that may cause operational problems
- ✦ View details of multiple databases on the same page for an overview of the current setup
- ✦ Use templates for extensions to minimize the number of fields to set up. Templates can be shared with other MX-ONE Manager Provisioning applications.
- ✦ Online help with user guide, task help and individual field help
- ✦ A site map gives you an overview and direct access to all tasks.
- ✦ With task orientation, all the settings associated with the tasks are collected on the same page.
- ✦ Easy-to-understand error messages
- ✦ Configuration of system administrators by promoting end-users with a higher security profile. These administrators can also access the MX-ONE Manager Telephony System interface.
- ✦ Access control for administrators based on location, authority level (security profile) and department affiliation.
- ✦ Configurable security profiles
- ✦ Logging of login attempts (security log), user activities (audit trail log) and internal information (event log)
- ✦ Import function for adding user and department data from DNA, CMG and comma-separated CSV formats. The DNA and CMG formats are mainly used for migration purposes.
- ✦ Export function where the data can be exported in CMG and a generic XML format. The XML format is the most complete.
- ✦ Local backup and restore of the MX-ONE Manager Provisioning database. You can also trigger backup of any of the connected MX-ONE Telephony Servers.
- ✦ The Compare with Subsystem task lists differences between the MX-ONE Manager Provisioning database and MX-ONE Telephony Server, CMG and MX-ONE Messaging. This makes it easy to correct inconsistencies in a controlled manner.
- ✦ Self-service where the end-users can access MX-ONE Manager Provisioning and manage personal lists, function keys and general settings themselves

General Functions

- ✦ End-user-oriented configuration, where you first create a user account and then associated user services, such as extensions and mailboxes
- ✦ Login lock after three unsuccessful login attempts. An end-user can unlock an account by entering his or her user ID. A new password will then be sent to the end-user's registered e-mail address.

Extension Configuration

Supports IP, digital, mobile, DECT, analog, ADN and virtual extensions
Supports DBC 2xx and DBC 4xx terminals
Settings are divided in a basic and advanced collection for easier administration
From one single page you can configure all extension features
Predefinition of mobile direct access destinations for mobile extensions
Automatic set up of least cost routing for internal calls to mobile extensions
Name information
Language
Voice announcements
Authorization code
Individual diversion
Parallel ringing
Dual forking
Hot line
Master extension
Alarm extension
Automatic answering
Personal number lists
Personal number list and function key settings synchronized for boss secretary functions
Terminal function key definitions
Function keys are organized according to the physical phone for both digital and IP phones
Hunt group
Pick-up group
Group do not disturb

Terminal Configuration

Automatic answer
Call back
Call diversion
Calendar
Call waiting
Conference
Call pick-up
Do not disturb
Last number redial
Intrusion
Malicious call tracing
Multiple directory number
Message waiting
Multiple name selection
Number log
Free on other line
Personal number
Transfer
Program
Telephony number selection

MX-ONE Messaging Configuration

Class of service
Message waiting indicator
Message presentation
Email server
Alternate extensions
SMS notification

The screenshot shows the 'MX-ONE™ Manager' interface with the 'Security Profiles' section active. The page title is 'Security Profile - Add'. It includes a navigation menu with 'Users', 'Services', 'Administrators', 'System', 'Logs', and 'Own Settings'. The 'Administrators' sub-menu is open, showing 'Administrator' and 'Security Profiles'. The main content area contains the following fields and options:

- Security Profile Name:** A text input field with a red asterisk indicating it is required.
- Description:** A text input field.
- Privileges:** A list of checkboxes for various permissions:
 - End user self service:
 - Manage user data:
 - Manage service data:
 - Manage administrators:
 - Manage security profiles:
 - Import/Export user data:
 - Manage UDF data:
 - MTS: Command line interface:
 - View subsystems:
 - Manage configuration data:
 - View user data:
 - View service data:
 - View administrators:
 - View security profiles:
 - Auto unlock:
 - MTS: Manage advanced feature:
 - MTS: Manage extension data:

At the bottom, there are 'Apply' and 'Cancel' buttons.

Security Profile interface

Technical Information

Server requirements

- ✦ SuSE Linux Enterprise Server 10 Service Pack 2
- ✦ Optional – SMTP-compliant e-mail server

Client side requirements

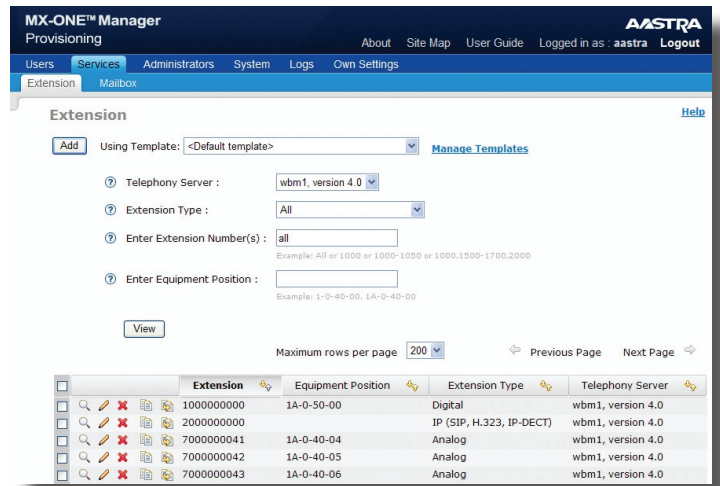
- ✦ Microsoft Internet Explorer 7.0 or later
- ✦ Mozilla Firefox 3.0 or later

MP support (backward compatible)

- ✦ MX-ONE Telephony Server from version 3.2
- ✦ CMG from version 2007 SP3
- ✦ MX-ONE Messaging Server from version 4.2

MP deployment options

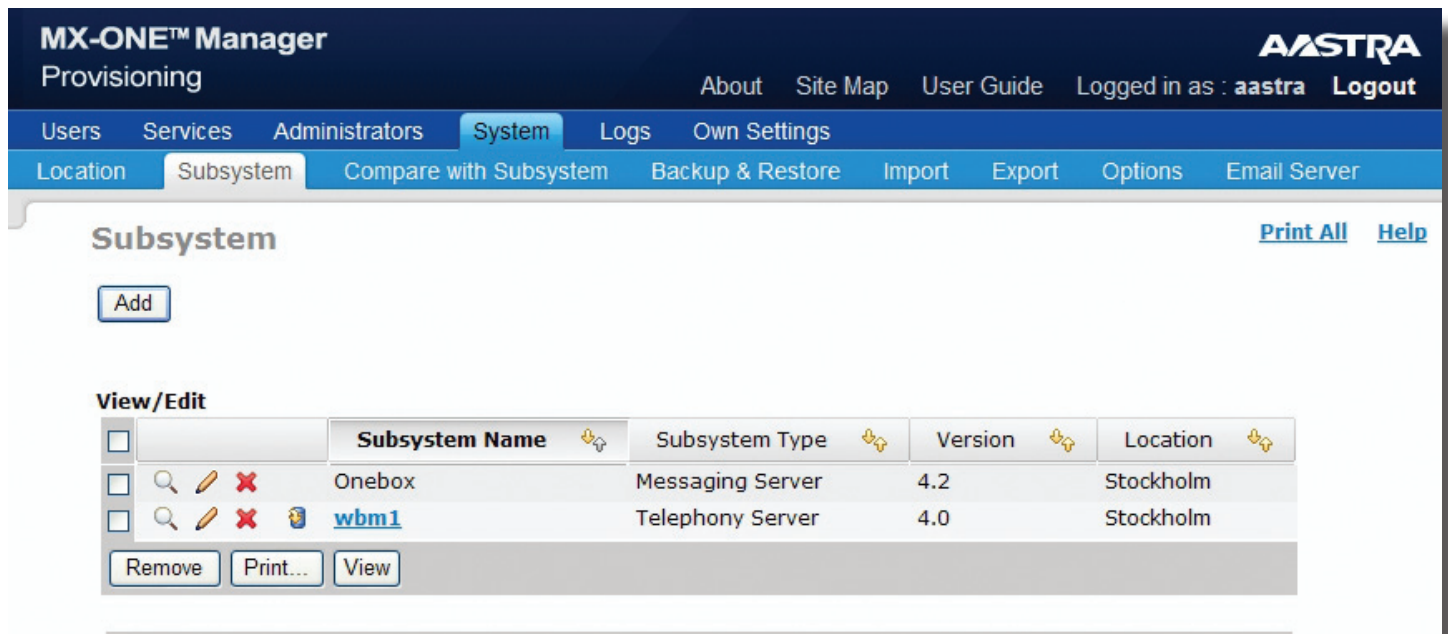
- ✦ Standalone on own Linux server
- ✦ On the same server as MX-ONE Telephony Servers



Extension interface

Interfaces

- ✦ Web service (SOAP) interface where different actions can be executed by a third-party applications
- ✦ HTTP and secure HTTP (HTTPS) protocols are supported



MX-ONE Manager Provisioning - Subsystem interface