

# Aastra MX-ONE™ Manager System Performance

Aastra MX-ONE™ Manager System Performance (MSP) provides simplified measurement and analysis of performance data from MX-ONE. It also gives the MX-ONE administrator information about the overall performance of trunks, routes, operators, individual extensions and common system resources.

- ✦ Graphical interface for managing and viewing the MX-ONE performance
- ✦ Easy to read and customize traffic information from the MX-ONE
- ✦ Traffic analysis of major MX-ONE components, including Radio Base Stations and IP extensions
- ✦ Multiple MX-ONE nodes can be managed from a single Performance Manager application

MSP supports extended reporting of radio base station performance statistics. Performance data can be easily accessed from the MX-ONE through the simple user interface. This data is automatically retrieved and stored in the MSP server.

Using the Presentation Manager sub-modules, the data can be easily viewed, modified and presented in either report or graphic formats for printing or distribution within the organization.

With MSP, potential bottlenecks in the MX-ONE implementation can be avoided and system resources tuned to ensure maximum availability.

## Benefits

Having the right statistics on the traffic flows in the communication system can prevent eventual bottlenecks and optimize performance in high traffic situations. Here are some examples where MSP can help:

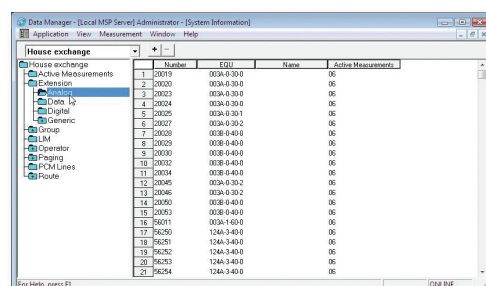
- ✦ Optimized trunk routes or leased lines means optimized payments to your service provider
- ✦ Correct number of tie-lines (internal trunks) means more calls staying on the corporate network for increased capacity, faster access and reduced toll charges
- ✦ Sufficient incoming trunks during peak traffic hours will

avoid lost calls and improve customer service, which in turn can mean an increase in potential business

- ✦ Optimized radio planning to avoid missed/dropped calls in dense in-building cordless environments
- ✦ Graphical interface saves time by enabling customized reports specific to your organization
- ✦ More information available in your organization through effective distribution of traffic information

## Data Manager

- ✦ Full Microsoft Windows graphical user interface with common MSP look and feel
- ✦ Up to 250 traffic measurements from the MX-ONE
- ✦ Manage up to 250 traffic measurements in total for trunks, extensions, operators, PCM lines, common system resources
- ✦ Multi-user environment for local and remote connections
- ✦ Automatic or manual traffic data extraction from MX-ONE
- ✦ Back-up and restore of historical traffic measurement data for presentation access:
  - Up to six months for primary database
  - Up to a year for auxiliary database
- ✦ Online display of the MX-ONE feedback
- ✦ Drag and drop support for data manipulation
- ✦ Multiple MX-ONE configurations
- ✦ Daily system log files



House exchange	Number	EQO	Name	Active Measurements
Active Measurements	1	20019	003A-0-30-0	06
Extension	2	20020	003A-0-30-0	06
Extension	3	20023	003A-0-30-0	06
Data InT	4	20024	003A-0-30-0	06
Digital	5	20025	003A-0-30-1	06
Generic	6	20027	003A-0-30-2	06
Inovae	7	20028	003B-0-40-0	06
Operator	8	20029	003B-0-40-0	06
Paging	9	20030	003B-0-40-0	06
PCM Lines	10	20032	003B-0-40-0	06
Route	11	20034	003B-0-40-0	06
	12	20045	003A-0-30-2	06
	13	20046	003A-0-30-2	06
	14	20090	003B-0-40-0	06
	15	20053	003B-0-40-0	06
	16	26011	003A-1-00-0	06
	17	26250	124A-3-40-0	06
	18	26251	124A-3-40-0	06
	19	26252	124A-3-40-0	06
	20	26253	124A-3-40-0	06
	21	26254	124A-3-40-0	06

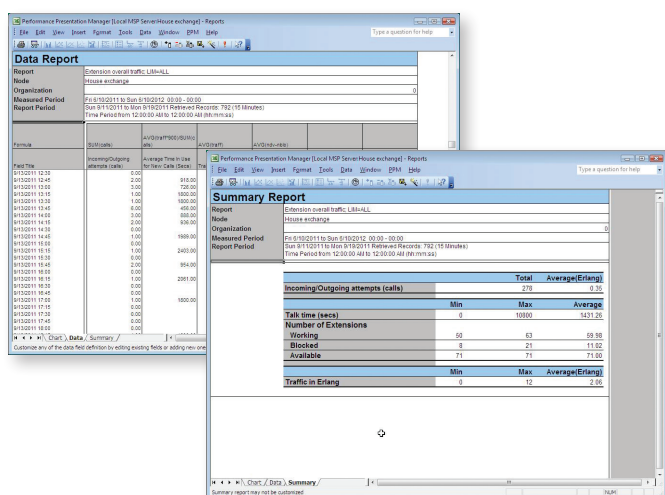
Local MSP Server Administrator

# Presentation Manager

- ✦ Macro Wizard for easy-to-design reports
- ✦ Simplified graphical user interface using Microsoft Excel
- ✦ Fully customizable report layouts
- ✦ Predefined reports for:
  - Operators
  - Trunk routes
  - Extensions
  - Hunt groups
  - Cordless extensions
  - IP network interface
- ✦ View reports in graphic, tabular or summary formats
- ✦ Manipulate chart data by editing existing traffic measurement data fields to create new reports
- ✦ All database fields available for customizable reports

## Task scheduler

- ✦ Automatic printing and mailing of reports
- ✦ Capability to switch between accessing primary or auxiliary databases



Performance Presentation Manager

# Technical information

## Hardware/Software

Since each MSP configuration has different storage and processing requirements, the following is a general guideline for a small MSP installation:

- ✦ Pentium 2.4 GHz or better for the MSP server
- ✦ Pentium 1.3 GHz or better for client applications
- ✦ Minimum 1 GB RAM
- ✦ Minimum 1024x768 SVGA monitor
- ✦ Connection to the IP network (LAN)
- ✦ MSP Server: Microsoft Windows 2003 or Microsoft Windows 2008 (32 bit)
- ✦ MSP clients: Microsoft Windows XP, Windows Vista or Windows 7
- ✦ Microsoft SQL Server 2005, SQL Server 2005 Express, SQL Server 2008, SQL Server 2008 express
- ✦ MSP Presentation Manager requires Microsoft Excel 2003, 2007 or 2010 to view reports

## Communication

- ✦ Connection to the MX-ONE is achieved via IP network using SSH
- ✦ Performance Manager clients can connect to the server via the corporate IP network (LAN) or even remotely via VPN connection

## Compatibility

- ✦ MSP is compatible with MX-ONE Version 4.1 and later

**Aastra Corporate Headquarters**  
155 Snow Blvd.  
Concord, Ontario  
Canada  
L4K 4N9  
Tel: +1 (905) 760 4200  
[www.aastra.com](http://www.aastra.com)

**Aastra USA Inc.**  
2811 Internet Blvd.  
Frisco, Texas  
United States  
75034  
Tel: +1 (800) 468 3266  
[www.aastrausa.com](http://www.aastrausa.com)

**Aastra Telecom United Kingdom**  
B3 Armstrong Mall  
Southwood Business Park  
Farnborough, Hampshire  
United Kingdom  
GU14 0NR  
Tel: +44 (0) 1252 532100  
[www.aastra.co.uk](http://www.aastra.co.uk)

